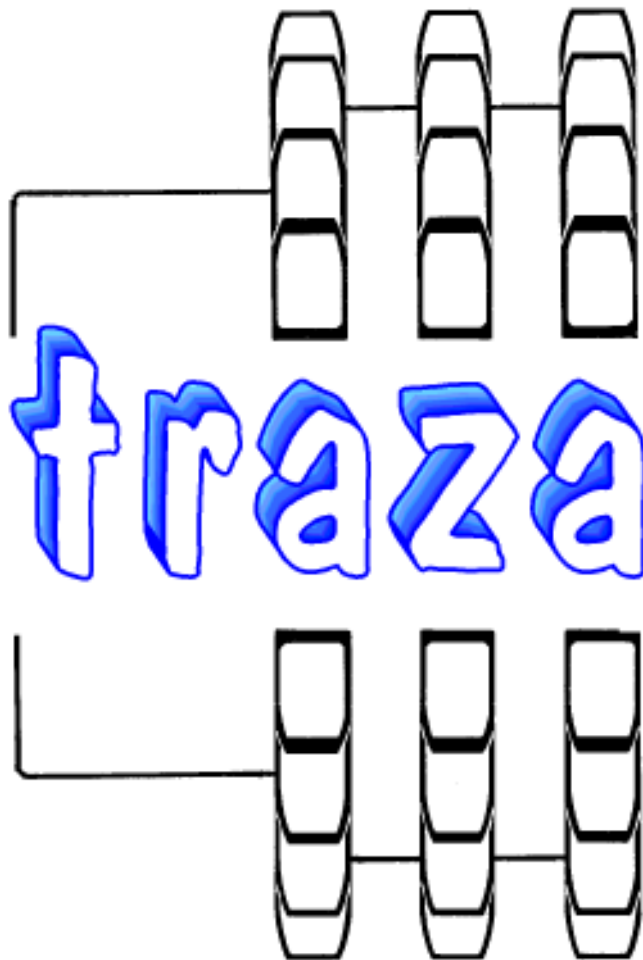


PERFILES



Transmisiones Zaragoza, S.L.

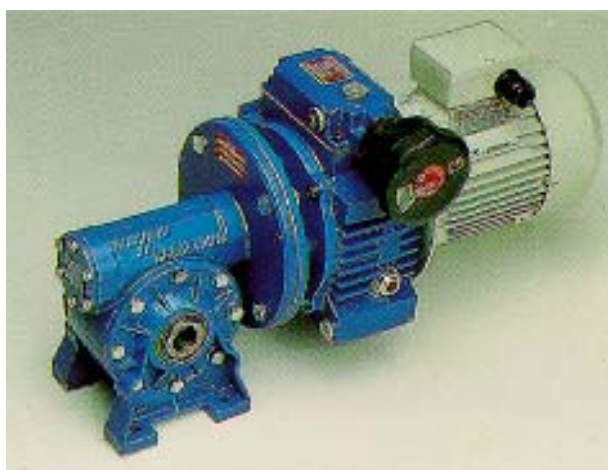
Isla de Menorca, s/nr. - Edificio Estrella, Local nr. 2
50014 - Zaragoza

Tfno. (976) 47 01 02 (8 líneas) - Fax (976) 47 32 20

E-Mail: traza@trazasl.com

www.trazasl.com

Transmisiones Zaragoza, S.L.



Indice

P

PERFILES

PERFILES GUIA BARANDILLAS

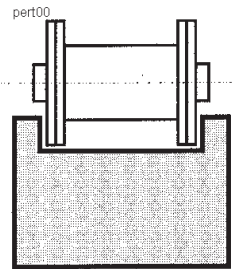
Barandillas, 14

PERFILES GUIA CADENAS

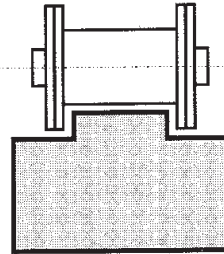
Eslabones, 12

Rodillos, 5

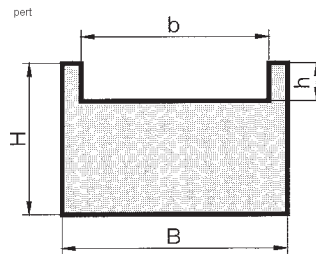
PERFIL GUIA PARA CADENAS DE RODILLOS



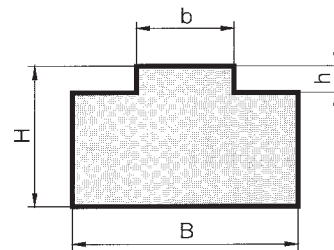
Tipo TU



Tipo T



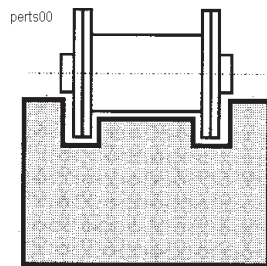
Tipo TU



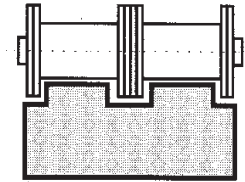
Tipo T

Medidas de la Cadena	DIN ISO	Perfil TIPO	B	H	b	h	Peso Kg/m
3/8" × 5/32"	—	TU	15	10	12	2,2	0,116
1/2" × 3/16"	—	TU	15	10	12	2,2	0,116
Medidas de la Cadena	DIN ISO	Perfil TIPO	B	H	b	h	Peso Kg/m
3/8" × 7/32"	06B-1	T	15	10	5,4	1,5	0,130
1/2" × 3/16"	083-1	T	15	10	4,5	1,5	0,130
1/2" × 1/4"	085-1	T	20	10	6,2	2,2	0,160
1/2" × 5/16"	08B-1	T1	20	10	7,4	2,2	0,175
1/2" × 5/16"	08B-1	T1	20	15	7,4	2,2	0,260
1/2" × 5/16"	08B-1	T1	20	20	7,4	2,2	0,340
1/2" × 5/16"	08B-1	T1	20	30	7,4	2,2	0,550
5/8" × 1/4"	—	T	20	10	6,2	2,6	0,160
5/8" × 3/8"	10B-1	T2	20	10	9,3	2,6	0,160
5/8" × 3/8"	10B-1	T2	20	15	9,3	2,6	0,250
5/8" × 3/8"	10B-1	T2	20	20	9,3	2,6	0,355
5/8" × 3/8"	10B-1	T2	20	30	9,3	2,6	0,550
3/4" × 7/16"	12B-1	T3	25	10	11,3	2,4	0,200
3/4" × 7/16"	12B-1	T3	25	15	11,3	2,4	0,320
3/4" × 7/16"	12B-1	T3	25	20	11,3	2,4	0,430
3/4" × 7/16"	12B-1	T3	25	30	11,3	2,4	0,690
1" × 17 mm	16B-1	T4	40	15	16,0	3,5	0,450
1" × 17 mm	16B-1	T4	40	20	16,0	3,5	0,675
1" × 17 mm	16B-1	T4	40	30	16,0	3,5	1,050
1 1/4" × 3/4"	20B-1	T5	45	15	18,0	4,2	0,545
1 1/2" × 1"	24B-1	T6	60	15	24,0	5,5	0,680
1 3/4" × 31 mm	28B-1	T7	75	20	30,0	6,8	1,150
1" × 31 mm	32B-1	T8	80	20	30,0	7,7	1,165

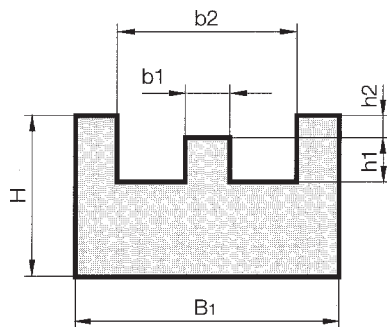
PERFIL GUIA PARA CADENAS DE RODILLOS



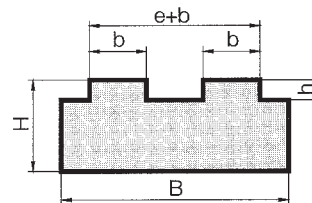
Tipo TS



Tipo T-Duplex



Tipo TS



Tipo T-Duplex

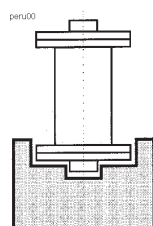
Tipo TS

Medidas de la Cadena	DIN ISO	Perfil TIPO	B	Medidas en mm.						Peso Kg/m
				H	b ₁	b ₂	h ₁	h ₂		
3/8" × 7/32"	06B-1	TS 1	20	10	3,8	13,0	1,5	1,1	0,188	
1/2" × 3/16"	083-1	TS 2	20	10	3,0	12,4	1,6	1,4	0,188	
1/2" × 1/4"	085-1	TS 3	22	10	4,5	15,1	2,2	1,6	0,207	
1/2" × 5/16"	08B-1	TS 4	25	15	5,7	16,3	2,2	1,6	0,352	
5/8" × 1/4"	-	TS 5	25	15	4,1	16,1	2,6	2,1	0,352	
5/8" × 3/8"	10B-1	TS 6	28	15	7,4	19,2	2,6	2,1	0,394	
3/4" × 7/16"	12B-1	TS 7	30	20	9,2	21,8	2,4	2,8	0,564	
1" × 17 mm	16B-1	TS 8	42	25	15,0	33,8	3,5	3,3	0,987	
1 1/4" × 3/4"	20B-1	TS 9	50	25	16,8	40,0	4,2	4,0	1,175	

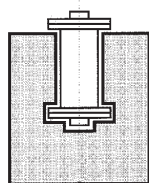
Tipo Tx.2

Medidas de la Cadena	DIN ISO	Perfil TIPO	B	Medidas en mm.					Peso Kg/m
				H	b	h	e+b		
3/8" × 7/32"	06B-2	T	25	10	5,4	1,5	15,6	0,220	
1/2" × 5/16"	08B-2	T1.2	35	10	7,4	2,2	21,2	0,295	
1/2" × 5/16"	08B-2	T1.2	35	15	7,4	2,2	21,2	0,460	
1/2" × 5/16"	08B-2	T1.2	35	20	7,4	2,2	21,2	0,630	
1/2" × 5/16"	08B-2	T1.2	35	30	7,4	2,2	21,2	1,000	
5/8" × 3/8"	10B-2	T2.2	40	10	9,3	2,6	25,7	0,320	
3/4" × 7/16"	12B-2	T3.2	45	10	11,3	2,4	30,7	0,380	
1" × 17 mm	16B-2	T4.2	48	15	16,0	3,5	48,0	0,600	
1 1/4" × 3/4"	20B-2	T5.2	55	15	18,0	4,2	55,0	0,670	
1 1/2" × 1"	24B-2	T6.2	72	20	24,0	5,5	72,0	1,400	
1 3/4" × 31 mm	28B-2	T7.2	89	25	30,0	6,8	89,0	2,150	
2" × 31 mm	32B-2	T8.2	88	30	30,0	7,7	88,0	2,550	

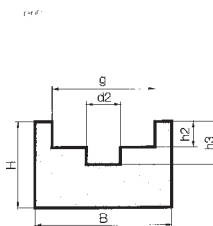
PERFIL GUIA PARA CADENA DE RODILLOS



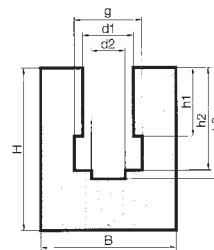
Tipo U



Tipo K



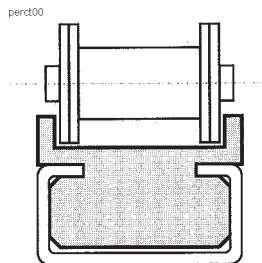
Tipo U



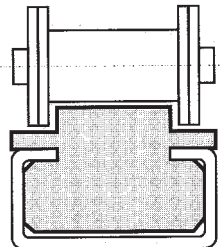
Tipo K

Medidas de la Cadena	DIN ISO	Tipo	Medidas en m m.								Peso Kg/m
			B	H	d ₁	d ₂	g	h ₁	h ₂	h ₃	
Tipo U											
3/8" x 5/32"	—	U	20	15	—	4	9,4	—	2,8	4,2	0,260
3/8" x 7/32"	06B-1	U	20	15	—	4	9,4	—	2,8	4,2	0,260
1/2" x 3/16"	083-1	U	20	15	—	4	10,8	—	2,3	3,8	0,250
1/2" x 1/4"	085-1	U	20	15	—	5	11,8	—	3,2	4,7	0,250
1/2" x 1/4"	—	U	25	15	—	5	12,8	—	3,5	5,0	0,310
1/2" x 5/16"	08B-1	U1	25	15	—	5	12,8	—	3,5	5,0	0,310
5/8" x 1/4"	—	U	25	15	—	6	15,4	—	3,6	5,2	0,300
5/8" x 3/8"	10B-1	U2	25	15	—	6	15,4	—	3,6	5,0	0,300
3/8" x 7/16"	12B-1	U3	25	20	—	7	17,0	—	3,9	5,7	0,400
1" x 17 mm	16B-1	U4	35	25	—	10	24,0	—	8,4	10,6	0,600
1 1/4" x 3/4"	20B-1	U5	55	25	—	11	28,0	—	10,0	12,2	1,076
1 1/2" x 1"	24B-1	U6	60	30	—	16	36,6	—	13,0	16,0	1,272
1 3/4" x 31 mm	28B-1	U7	65	30	—	17	40,0	—	16,0	18,0	1,276
2" x 31 mm	32B-1	U8	70	30	—	19	44,6	—	16,0	18,7	1,336
Tipo K											
3/8" x 5/32"	—	K	20	25	6,6	4	9,4	3,6	7,0	8,0	0,430
3/8" x 7/32"	06B-1	K	20	25	6,6	4	9,4	5,5	8,9	10,0	0,430
1/2" x 3/16"	083-1	K	20	25	8,0	4	10,8	4,5	7,5	9,0	0,420
1/2" x 1/4"	085-1	K	24	30	8,0	5	11,8	6,2	9,8	11,3	0,550
1/2" x 1/4"	—	K	24	30	8,8	5	12,8	6,2	10,2	11,7	0,550
1/2" x 5/16"	08B-1	K1	24	30	8,9	5	12,8	7,4	11,5	13,0	0,550
5/8" x 1/4"	—	K	30	30	10,6	6	15,4	6,2	10,2	11,6	0,730
5/8" x 3/8"	10B-1	K2	30	35	10,6	6	15,4	9,3	13,5	14,9	0,830
3/4" x 7/16"	12B-1	K3	40	35	12,4	7	17,0	11,3	15,9	17,5	1,100
1" x 17 mm	16B-1	K4	40	45	16,4	10	24,0	16,0	25,7	27,0	1,220
1 1/4" x 3/4"	20B-1	K5	50	50	20,0	11	28,0	18,0	29,5	31,7	1,760
1 1/2" x 1"	24B-1	K6	60	60	27,0	16	36,6	24,0	38,2	41,2	2,350
1 3/4" x 31 mm	28B-1	K7	60	70	30,0	17	41,0	30,0	47,0	49,0	2,520
2" x 36 mm	32B-1	K8	70	75	31,0	19	44,6	30,0	47,3	50,0	3,350

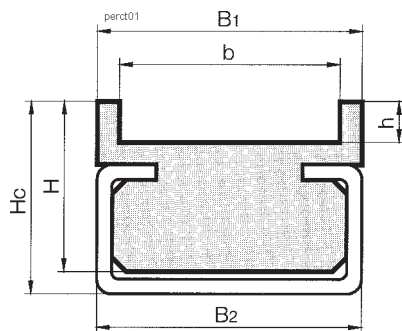
PERFIL GUIA PARA CADENA DE RODILLOS



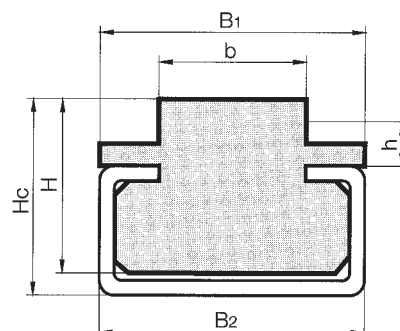
Tipo CTU



Tipo CT



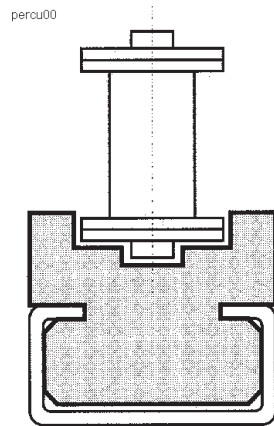
Tipo CTU



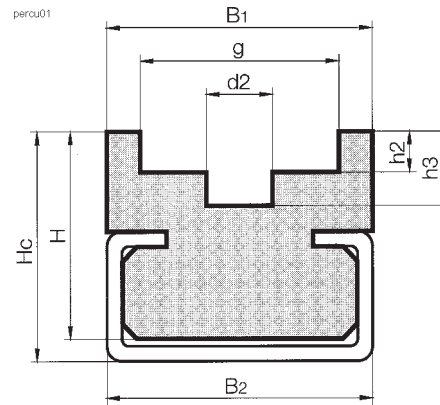
Tipo CT

Medidas de la Cadena	DIN ISO	Tipo	Perfil	Medidas en mm.						Peso Kg/m
				B ₁	B ₂	H	H _c	b	h	
Tipo CTU										
3/8" × 5/32"	—	CTU3H15	C3	17,0	20	15	17	12,0	2,2	0,606
1/2" × 3/16"	083-1	CTU3H15	C3	17,0	20	15	17	12,0	2,2	0,606
Tipo CT										
3/8" × 7/32"	06B-1	CT 3H15	C 3	17,0	20	15	17	5,4	1,5	0,805
1/2" × 3/16"	083-1	CT 3H15	C 3	17,0	20	15	17	4,5	1,5	0,805
1/2" × 1/4"	085-1	CT 3H15	C 3	17,0	20	15	17	6,2	2,2	0,805
1/2" × 5/16"	08B-1	CT 1H10	C 1	20,0	24	10	11	7,4	2,2	0,430
1/2" × 5/16"	08B-1	CT 3H15	C 3	17,0	20	15	17	7,4	2,2	0,805
5/8" × 1/4"	—	CT 3H15	C 3	17,0	20	15	17	6,2	2,6	0,820
5/8" × 3/8"	10B-1	CT 3H15	C 3	17,0	20	15	17	9,3	2,6	0,820
3/4" × 7/16"	12B-1	CT 3H15	C 3	20,0	20	15	17	11,3	2,4	0,830
3/4" × 7/16"	12B-1	CT 5H15	C 5	24,0	28	15	18	11,3	2,4	1,220
1" × 17 mm	16B-1	CT 5H15	C 5	24,0	28	15	18	16,0	3,5	1,225
1 1/4" × 3/4"	20B-1	CT 5H15	C 5	28,0	28	15	18	18,0	4,2	1,230
1 1/2" × 1"	24B-1	CT 9H25	C 9	33,0	38	25	30	24,0	5,5	2,610
1 3/4" × 31 mm	28B-1	CT 9H25	C 9	38,0	38	25	30	30,0	6,8	2,660
2" × 31 mm	32B-1	CT 9H25	C 9	38,0	38	25	30	30,0	7,7	2,660
2" × 31 mm	32B-1	CT12H25	C12	60,0	60	25	35	30,0	7,7	3,310

PERFIL GUIA PARA CADENA DE RODILLOS



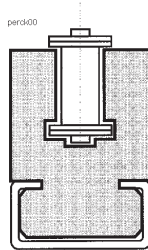
Tipo CU



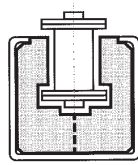
Tipo CU

Medidas de la Cadena	DIN ISO	Tipo	Perfil	Medidas en mm.								Peso Kg/m
				B ₁	B ₂	H	H _c	d ₂	g	h ₂	h ₃	
Tipo CU												
3/8" × 5/32"	—	CU 3H15	C 3	20	20	15	17	4	9,4	2,8	4,2	0,750
3/8" × 7/32"	06B-1	CU 3H15	C 3	20	20	15	17	4	9,4	2,8	4,2	0,750
1/2" × 3/16"	—	CU 3H15	C 3	20	20	15	17	4	10,8	2,3	3,8	0,740
1/2" × 1/4"	—	CU 5H15	C 5	28	28	15	18	5	11,8	3,2	4,7	1,110
1/2" × 1/4"	—	CU 5H15	C 5	28	28	15	18	5	12,8	3,5	5,0	1,170
1/2" × 5/16"	08B-1	CU 1H15	C 1	20	24	10	11	5	12,8	3,5	5,0	0,420
5/8" × 1/4"	—	CU 5H12	C 5	24	28	12	18	6	15,4	3,6	5,2	1,160
5/8" × 3/8"	10B-1	CU 5H12	C 5	24	28	12	18	6	15,4	3,6	5,0	1,130
3/4" × 7/16"	12B-1	CU 5H12	C 5	24	28	12	18	7	17,0	3,9	5,7	1,130
1" × 17 mm	16B-1	CU 9H20	C 9	33	38	20	30	10	24,0	8,4	10,6	2,260
1 1/4" × 3/4"	20B-1	CU12H25	C12	60	60	25	35	11	28,0	10,0	12,2	3,210
1 1/2" × 1"	24B-1	CU12H30	C12	60	60	30	40	16	36,6	13,0	16,0	3,510
1 3/4" × 31 mm	28B-1	CU12H40	C12	65	60	40	45	17	40,0	16,0	18,0	4,010
2" × 31 mm	32B-1	CU12H40	C12	70	60	40	45	19	44,6	16,0	18,7	4,210

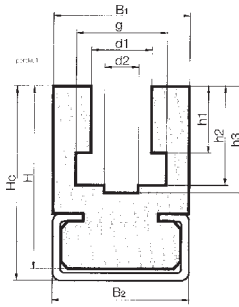
PERFIL GUIA PARA CADENA DE RODILLOS



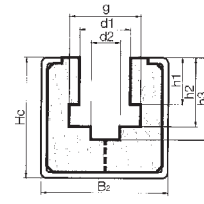
Tipo CK



Tipo CKG



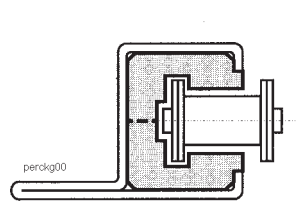
Tipo CK



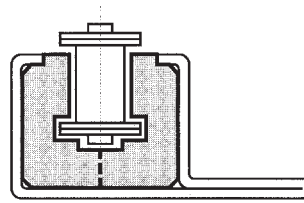
Tipo CKG

Medidas de la Cadena	DIN ISO	Tipo	Perfil	Medidas en mm.									Peso Kg/m	
				B	B	H	H	d	d	g	h	h		h
Tipo CK														
3/8" x 5/32"	—	CK 3	C 3	20	20	19	21	6,6	4	9,4	3,6	7,0	8,0	0,920
3/8" x 7/32"	06B-1	CK 3	C 3	20	20	19	21	6,6	4	9,4	5,5	8,9	10,0	0,919
1/2" x 3/16"	083-1	CK 3	C 3	20	20	19	21	8,0	4	10,8	4,5	7,5	9,0	0,919
1/2" x 1/4"	085-1	CK 7	C 7	24	28	29	32	8,0	5	11,8	6,2	9,8	11,3	1,755
1/2" x 1/4"	—	CK 7	C 7	24	28	29	32	8,8	5	12,8	6,2	10,2	11,7	1,755
1/2" x 5/16"	08B-1	CK 7	C 7	24	28	29	32	8,9	5	12,8	7,4	11,5	13,0	1,755
5/8" x 1/4"	—	CK 7	C 7	24	28	29	32	10,6	6	15,4	6,2	10,2	11,6	1,690
5/8" x 3/8"	10B-1	CK 7	C 7	24	28	29	32	10,6	6	15,4	9,3	13,5	14,9	1,690
3/4" x 7/16"	12B-1	CK 9	C 9	32	38	40	43	12,4	7	17,0	11,3	15,9	17,5	2,860
1" x 17 mm	16B-1	CK 9	C 9	40	38	47	50	16,4	10	24,0	16,0	25,7	27,7	2,700
1 1/4" x 3/4"	20B-1	CK12	C12	60	60	52	55	20,0	11	28,0	18,0	29,5	31,7	4,810
1 1/2" x 1"	24B-1	CK12	C12	60	60	62	65	27,0	16	36,6	24,0	38,2	41,2	5,010
1 3/4" x 31 mm	28B-1	CK12	C12	70	60	77	80	30,0	17	40,0	30,0	47,0	49,0	6,210
2" x 31 mm	32B-1	CK12	C12	70	60	77	80	31,0	19	44,6	30,0	47,3	50,0	6,210
Tipo CKG														
3/8" x 5/32"	—	CKG10	C10	—	30	—	24	6,6	4	9,4	3,6	7,0	8,0	1,465
3/8" x 7/32"	06B-1	CKG10	C10	—	30	—	24	6,6	4	9,4	5,5	8,9	10,0	1,295
1/2" x 3/16"	083-1	CKG10	C10	—	30	—	24	8,0	4	10,8	4,5	7,5	9,0	1,295
1/2" x 1/4"	085-1	CKG10	C10	—	30	—	24	8,0	5	11,8	6,2	9,8	11,3	1,295
1/2" x 1/4"	—	CKG10	C10	—	30	—	24	8,8	5	12,8	6,2	10,2	11,7	1,295
1/2" x 5/16"	08B-1	CKG10	C10	—	30	—	24	8,9	5	12,8	7,4	11,5	13,0	1,295
5/8" x 1/4"	—	CKG10	C10	—	30	—	24	10,6	6	15,4	6,2	10,2	11,6	1,295
5/8" x 3/8"	10B-1	CKG10	C10	—	30	—	24	10,6	6	15,4	9,3	13,5	14,9	1,295
3/4" x 7/16"	12B-1	CKG10	C10	—	30	—	24	12,4	7	17,0	11,3	15,9	17,5	1,295
1" x 17 mm	16B-1	CKG11	C11	—	45	—	40	16,4	10	24,0	16,0	25,7	27,7	3,175
1 1/4" x 3/4"	20B-1	CKG11	C11	—	45	—	40	20,0	11	28,0	18,0	29,5	31,7	3,070
1 1/2" x 1"	24B-1	CKG13	C13	—	65	—	55	27,0	16	36,6	24,0	38,2	41,2	6,260
1 3/4" x 31 mm	28B-1	CKG13	C13	—	65	—	55	30,0	17	41,0	30,0	47,0	49,0	5,860
2" x 31 mm	32B-1	CKG13	C13	—	65	—	60	31,0	19	44,6	30,0	47,3	50,0	5,760

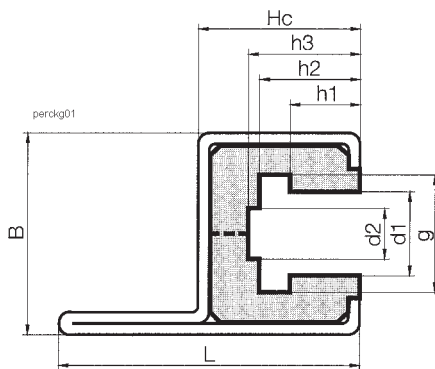
PERFIL GUIA PARA CADENA DE RODILLOS



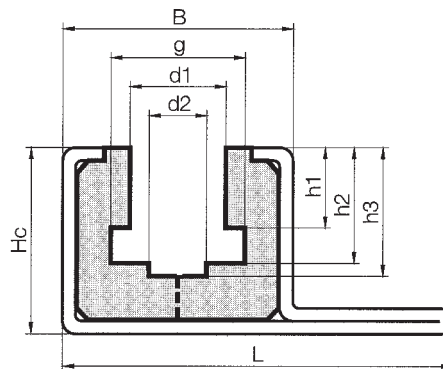
Tipo CKG 14H
en una pieza



Tipo CKG 15V
en una pieza



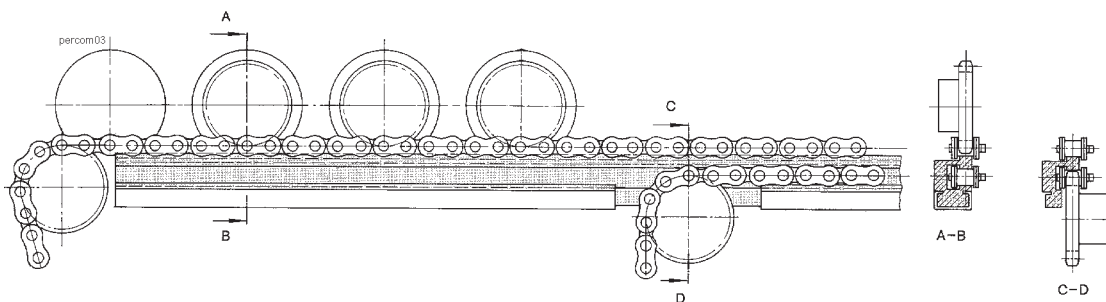
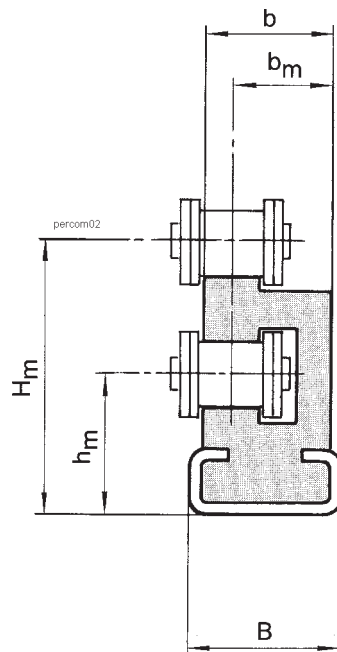
Tipo CKG 14 H



Tipo CKG 15 V

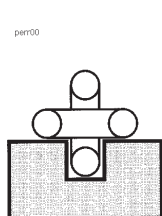
Medidas de la Cadena	DIN ISO	Tipo	Perfil	Medidas en mm.								Peso Kg/m
				B	H _c	L	d ₁	g	h ₁	h ₂	h ₃	
Tipo CKG 14 H												
3/8" × 5/32"	—	CKG14H	C14H	31	25	47	6,6	9,4	3,6	7,0	8,0	2,30
3/8" × 7/32"	06B-1	CKG14H	C14H	31	25	47	6,6	9,4	5,5	8,9	10,0	2,29
1/2" × 3/16"	083-1	CKG14H	C14H	31	25	47	8,0	10,8	4,5	7,5	9,0	2,29
1/2" × 1/4"	085-1	CKG14H	C14H	31	25	47	8,0	11,8	6,2	9,8	11,3	2,29
1/2" × 1/4"	—	CKG14H	C14H	31	25	47	8,8	12,8	6,2	10,2	11,7	2,29
1/2" × 5/16"	08B-1	CKG14H	C14H	31	25	47	8,9	12,8	7,4	11,5	13,0	2,29
5/8" × 1/4"	—	CKG14H	C14H	31	25	47	10,6	15,4	6,2	10,2	11,6	2,24
5/8" × 3/8"	10B-1	CKG14H	C14H	31	25	47	10,6	15,4	9,3	13,5	14,9	2,24
3/4" × 7/16"	12B-1	CKG14H	C14H	31	25	47	12,4	17,0	11,3	15,9	17,5	2,20
Tipo CKG 15 V												
3/8" × 5/32"	—	CKG15V	C15V	31	25	53	6,6	9,4	3,6	7,0	8,0	2,34
3/8" × 7/32"	06B-1	CKG15V	C15V	31	25	53	6,6	9,4	5,5	8,9	10,0	2,34
1/2" × 3/16"	083-1	CKG15V	C15V	31	25	53	8,0	9,4	4,5	7,5	9,0	2,30
1/2" × 1/4"	085-1	CKG15V	C15V	31	25	53	8,0	10,8	6,2	9,8	11,3	2,30
1/2" × 1/4"	—	CKG15V	C15V	31	25	53	8,8	11,8	6,2	10,2	11,7	2,30
1/2" × 5/16"	08B-1	CKG15V	C15V	31	25	53	8,9	12,8	7,4	11,5	13,0	2,30
5/8" × 1/4"	—	CKG15V	C15V	31	25	53	10,6	15,4	6,2	10,2	11,6	2,25
5/8" × 3/8"	10B-1	CKG15V	C15V	31	25	53	10,6	15,4	9,3	13,5	14,9	2,25
3/4" × 7/16"	12B-1	CKG15V	C15V	31	25	53	12,4	17,0	11,3	15,9	17,5	2,25

PERFIL GUIA PARA CADENAS DE RODILLOS

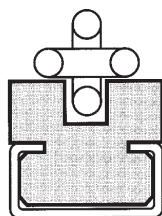


Medidas de la Cadena	DIN ISO	Tipo	Perfil	Medidas en mm.					Peso Kg/m
				B	H	b	b _m	h	
Tipo COMBI									
3/8" × 7/32"	06B-1	COMBI-0	C3	20	30,2	17	14,5	17	0,898
5/8" × 5/16"	08B-1	COMBI-1	C3	20	33,8	20	16,5	18	0,964
5/8" × 3/8"	10B-1	COMBI-2	C3	20	41,1	20	15,5	21	1,125
3/4" × 7/16"	12B-1	COMBI-3	C5	28	46,5	24	18,5	24	1,720
1" × 17 mm	16B-1	COMBI-4	C9	38	62,0	33	25,0	34	3,167

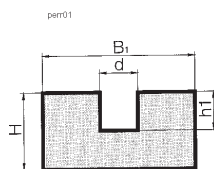
PERFIL GUIA PARA CADENAS ESLABONES



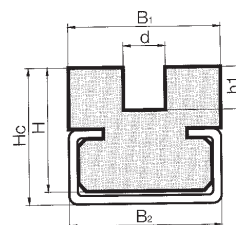
Tipo R



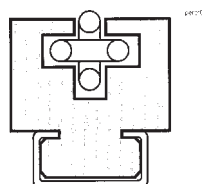
Tipo CRU



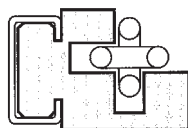
Tipo R



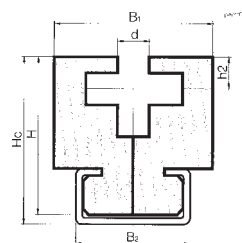
Tipo CRU



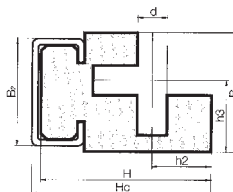
Tipo CR



Tipo CRO



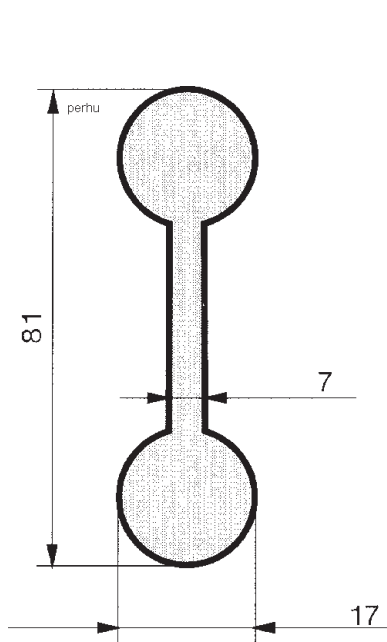
Tipo CR



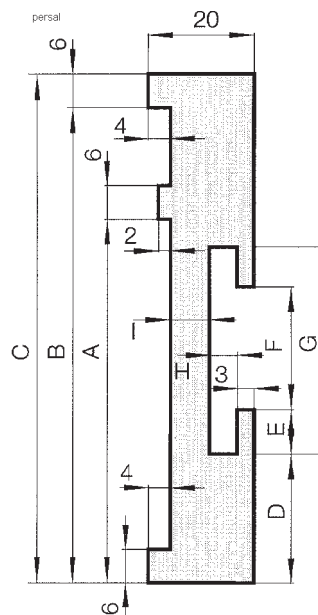
Tipo CRO

Medida Cadena <small>per02</small>	Tipo	Perfil	Medidas en mm.								Peso Kg/m
			B ₁	B ₂	H	H _c	d	h ₁	h ₂	h ₃	
Tipo R											
6	R 6	—	30	—	15	—	7,0	7	—	—	0,401
8	R 8	—	35	—	20	—	9,5	9	—	—	0,619
10	R10	—	45	—	25	—	11,5	11	—	—	1,005
13	R13	—	55	—	30	—	15,0	15	—	—	1,425
Tipo CRU											
6	CRU 6	C 5	30	28	15	18	7,0	7	—	—	1,167
8	CRU 8	C 9	38	38	20	25	9,5	9	—	—	1,182
10	CRU10	C 9	45	38	22	25	11,5	11	—	—	2,111
13	CRU13	C12	60	60	30	33	15,0	15	—	—	5,531
Tipo CR											
6	CR 6	C 9	45	38	42	45	7,0	—	8,0	—	3,290
8	CR 8	C 9	50	38	47	50	9,5	—	9,5	—	3,932
10	CR10	C 9	50	38	57	60	11,5	—	14,0	—	3,970
13	CR13	C12	60	60	72	75	15,0	—	18,0	—	5,112
Tipo CRO											
6	CRO 6	C 3	27,0	20	32	34	7,0	—	10,5	17,5	1,157
8	CRO 8	C 5	32,0	28	39	42	9,5	—	12,5	20,5	2,203
10	CRO10	C 9	42,5	38	53	56	11,5	—	16,5	25,5	3,264
13	CRO13	C12	60,0	60	67	70	15,0	—	20,5	33,5	4,104

PERFIL GUIA PARA BARANDILLAS



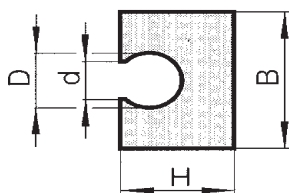
Perfil de hueso
Largo estándar 3.000 mm



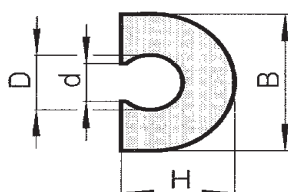
Guía de barandilla en versión salva-etiquetas. En el pedido deben indicar las cotas desde la A hasta la I.

PERFIL GUIA PRESION PARA BARANDILLAS

perpre **Presión Cuadrado**



Presión Redondo



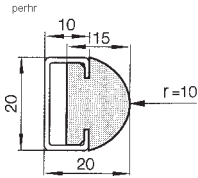
Medidas en mm.

B_1	B_2	H	H_c
8	14	20	7,0
8	14	20	7,0
10	16	22	8,5
10	16	22	8,5
12	18	24	10,0
12	18	24	10,0

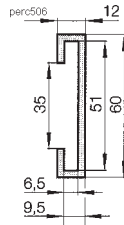
Medidas en mm.

B_1	B_2	H	H_c
8	14	20	7,0
8	14	20	7,0
10	16	22	8,5
10	16	22	8,5
12	18	24	10,0
12	18	24	10,0

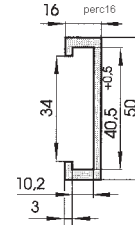
PERFIL GUIA PARA BARANDILLAS



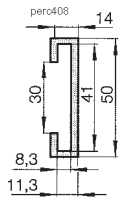
Perfil HR



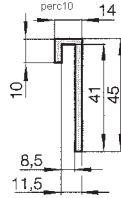
Perfil C
Para pletina
de 50 x 6



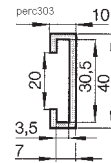
Perfil C
Para pletina
de 40 x 10



Perfil C
Para pletina
de 40 x 8

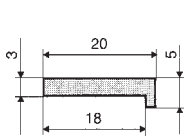


Perfil L
Para pletina
de 40 x 8

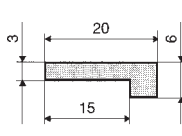


Perfil C
Para pletina
de 30 x 3

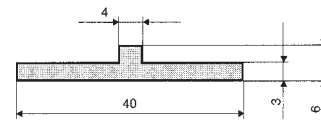
BANDAS MECANIZADAS



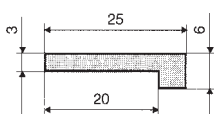
Perfil L 20 x 3



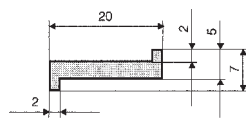
Perfil L 20 x 6



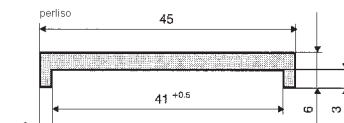
Perfil WP 40 x 3



Perfil WP 25 x 6



Perfil Z 20 x 3



Perfil liso